



## Data Recorder/Logger Software

### Overview

DAC Express data acquisition software supports our complete line of mechanical test products. This high performance package supports dual sample rates of up to 196 kSa/s for high speed data and up to 1.5 kSa/s per channel scans for low-speed data. The intuitive user interface simplifies the time-consuming tasks of configuring hardware, collecting data, and viewing measurement results. It is as simple as 1-2-3: 1. Setup, 2. Record, 3. View.

**Setup:** On startup DAC Express automatically identifies the slot and configuration of all the measurement hardware in the system and populates the channel editor with information about the available measurement channels. This spreadsheet like editor allows users to easily enable and name input channels. Pull-down menus select from the available settings for input functions, transducer types, filter cut off frequency, voltage range, calibration and more. Tabs group and identify similar channel types for fast and easy test setups. The time base editor allows you to set triggering, recording time and two sample rates, one for the Dynamic (VT1432/3) and one for the Static DAC (VT1413/19/15/22) measurement channels. Based on this recording time and sample rate DAC Express calculates the file size and disk space required for the test. Two synchronized files are created per test run. Files of more than 1000 terabytes are possible with the DAC Express SDF 5.0 file format. Data rates of up to 18.5 MB/s are available with the VT2216A VXI Data Disk.

**Record:** The Data Recorder allows you to quickly set up real-time displays of selected data channels. Just drag & drop any of the following display types to build your data collection monitor.

- Numeric Readouts
- Meters
- Bar Graphs
- Strip Charts
- X-Y Plots
- Frequency/Time Spectrums

All input channels are live in this mode. To store data to file just press Record!

**View:** After data is recorded a project file is created for each data set. The project file includes all information about that test including channel settings, user text, data displays and of course the data. The data browser allows you to play back the data or use cursors and the scroll bar to compare any cross channel values. For more advanced analysis use the export function to export any part of your data to Excel or Matlab. SDF, CSV and text file formats are directly supported by DAC Express.

## Features

No Programming Required for VXI based Data Acquisition

Combined measurements of strain, temperature, pressure, digital states, shaft RPM, frequency, vibration and more.

Replace Digital Tape Recorders

Online real-time monitoring of any selected number of input channels up to 768

Post-Test Data Viewing helps find events of interest

Formatted output of data in SDF, CSV or text for analysis in Excel, Matlab or other popular analysis software

## Data Recorder/Logger Software

### Specifications

#### Maximum number of channels

VT1432/35/36	192
VT1413/19/15	768
VT1422A500	

#### Sample rate per channel

VT1432/35/36	20 to 196 kSa/s
VT1413/19/15/22	6 to 1.25 kSa/s on 64 ch 10 kSa/s for 3 ch

#### Maximum data file size

VT1432/35/36	1000 TB
VT1413/19/15	2 GB

#### Maximum aggregate data rates

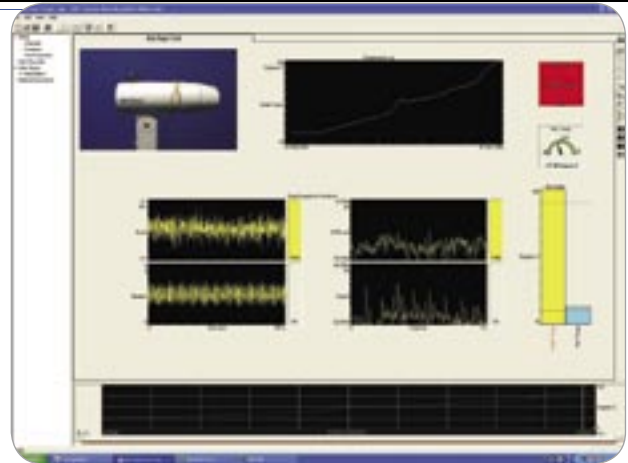
VT1413/19/15	496 kSa/s
VT1432/35/36	819 kSa/s
VT2216A – 012	9.25 MSa/s

### Supported Products

#### Windows 2000 or XP

#### Instruments and Signal Conditioning

VT1413C	64 channel Scanning A/D
VT1415A	Algorithmic Closed Loop Controller
VT1419A	Multifunction Measurement /Control
VT1422A	Remote Channel Multifunction DAC
VT1501A	Direct Input SCP
VT1502A	Low-Pass Filter SCP
VT1503A	Programmable Filter/Gain SCP
VT1505A	Current Source SCP
VT1506A	120 $\Omega$ Strain SCP
VT1507A	350 $\Omega$ Strain SCP



VT1508A	8-channel x16 Fixed Gain/Filter SCP
VT1509A	8-channel x64 Fixed Gain/Filter SCP
VT1510A	Sample & Hold SCP
VT1511A	Transient Strain SCP
VT1512A	25 Hz Low-Pass Filter SCP
VT1513A	Fixed Attenuator/Filter SCP
VT1518A	4-wire Resistance SCP
VT1521	4-channel High Speed Bridge SCP
VT1531A	Voltage Output SCP
VT1532A	Current Output SCP
VT1533A	16-bit Digital I/O SCP
VT1536A	8-bit Isolated Digital I/O SCP
VT1538A	Enhanced Frequency/Totalize/PWM SCP
VT1539A	Remote Channel Signal Cond. Plug-on
VT1432A/B	16-channel Digitizer Plus DSP
VT1433A/B	8-channel Digitizer Plus DSP
VT1434A	4-channel Arbitrary Source
VT1435	8-channel 24-bit Digitizer plus DSP
VT1436	16-channel 24-bit Digitizer plus DSP
VT3240A	Voltage Input BoB
VT3241A	IEPE/Voltage Input BoB
VT3242A	Charge/Voltage/IEPE BoB
VT3243A	Mic/Voltage/IEPE BoB
VT2216A	VXI/SCSI Interface (Opt UGV Local Bus required on VT143xx)

### Ordering Information

VT9801B

VT9801B	DAC Express Data Acquisition/Recorder Software
VT9801U	Upgrade DAC Express Data Acquisition/Recorder Software – Please send old password with PO to receive upgrade price